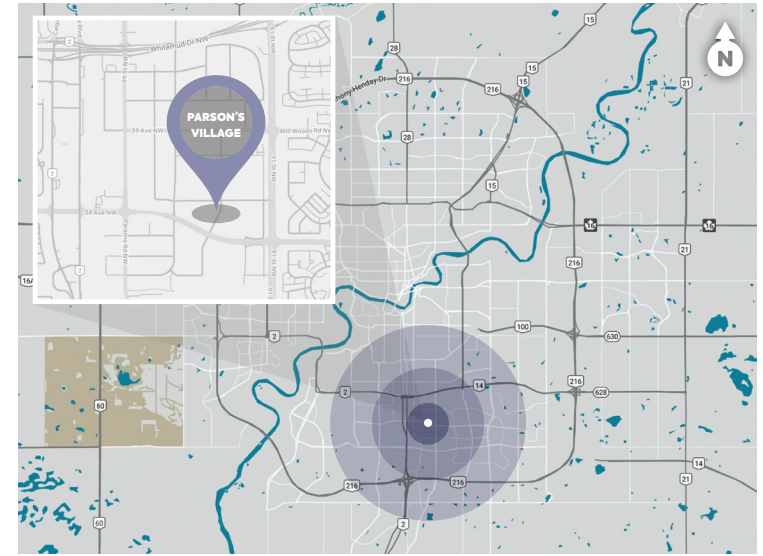


PARSON'S VILLAGE

93 STREET & 34 AVENUE | EDMONTON, AB

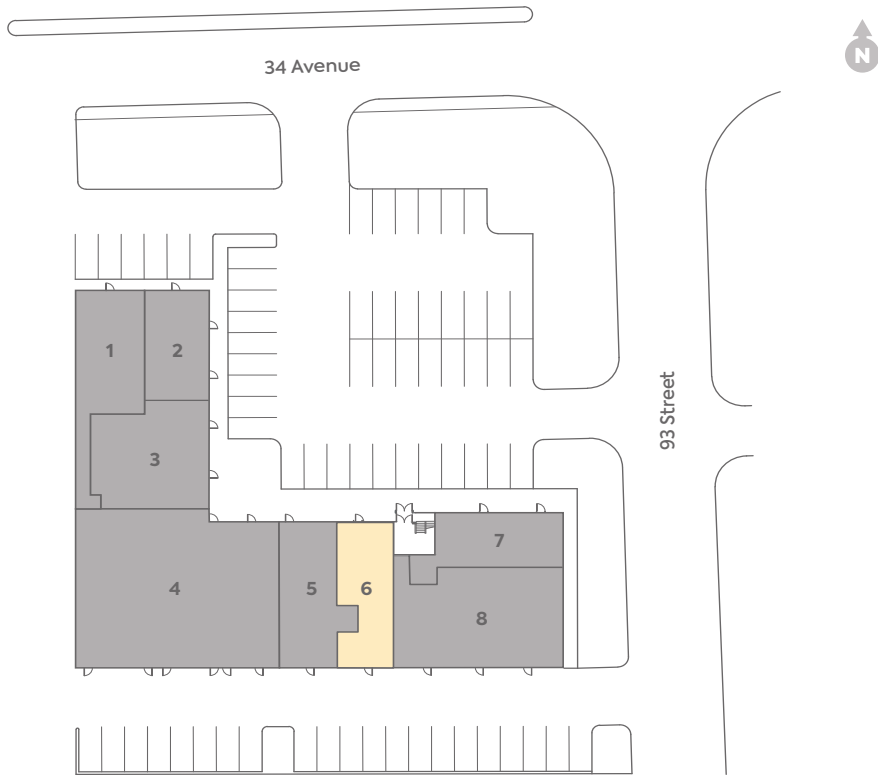
+ OFFICE FOR LEASE

Parson's Village provides tenants with retail and office space at a competitive rate in an easily accessible and highly visible area in Edmonton's southeast.



+ SITE PLAN – RETAIL SPACE

PARSON'S VILLAGE



1	SAI Canada Immigration	1,300 SF
2	Gill International Travel	1,009 SF
3	Wind Mobile/Sandhu Computers	1,838 SF
4	Edmonton Violence Prevention Centre	4,553 SF
5	Quality Zabeeha	1,361 SF
6	PENDING	1,152 SF
7	34 Ave Dental with Dr. Sam Huang	1,205 SF
8	Sylvan Learning	2,125 SF

The specifications, site plan(s) and rendering(s) depicted herein are proposed, represent the current expectation of the layout of the development and are subject to change by Qualico from time to time without notice. Demographics data collected from Environics Analytics.

+ AREA DEMOGRAPHICS



POPULATION

1 KM	3 KM	5 KM
900	56,377	164,072



HOUSEHOLDS

1 KM	3 KM	5 KM
297	20,201	58,770



AVERAGE INCOME

1 KM	3 KM	5 KM
\$100,840	\$96,188	\$110,977



VEHICLES PER DAY

22,600 on 34 Avenue in front of property in 2018*

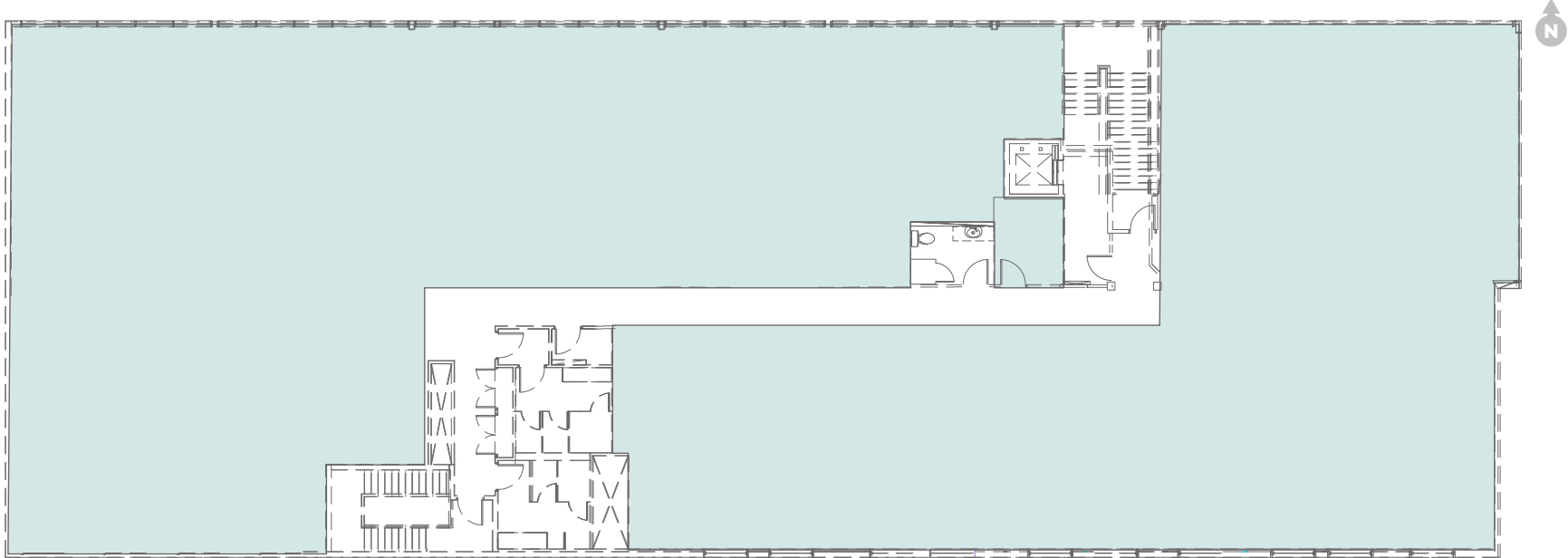
**Most recent data available*



+ FLOOR PLAN – 2ND FLOOR OFFICE SPACE

PARSON'S VILLAGE

Up to (approx.) **11,678 SF** of office space available on the 2nd floor.
Space can be demised into options ranging from 1,000 – 11,678 SF



The specifications, site plan(s) and rendering(s) depicted herein are proposed, represent the current expectation of the layout of the development and are subject to change by Qualico from time to time without notice.

+ PROPERTY DETAILS



SITE AREA
1.15 Acres



RENTAL RATE
RETAIL: \$20.00/SF (est.)
OFFICE: Market



AVAILABILITY
Immediately



GROSS BUILDING AREA
26,187 SF



ADDITIONAL RENT
Prop Tax: \$3.97/SF
CAM: \$7.22/SF
EST. TOTAL: \$11.19/SF



PARKING RATIO
1/1,000 SF

CONTACT



LAURA BRADLEY
780.293.1214
laura.bradley@qualico.com